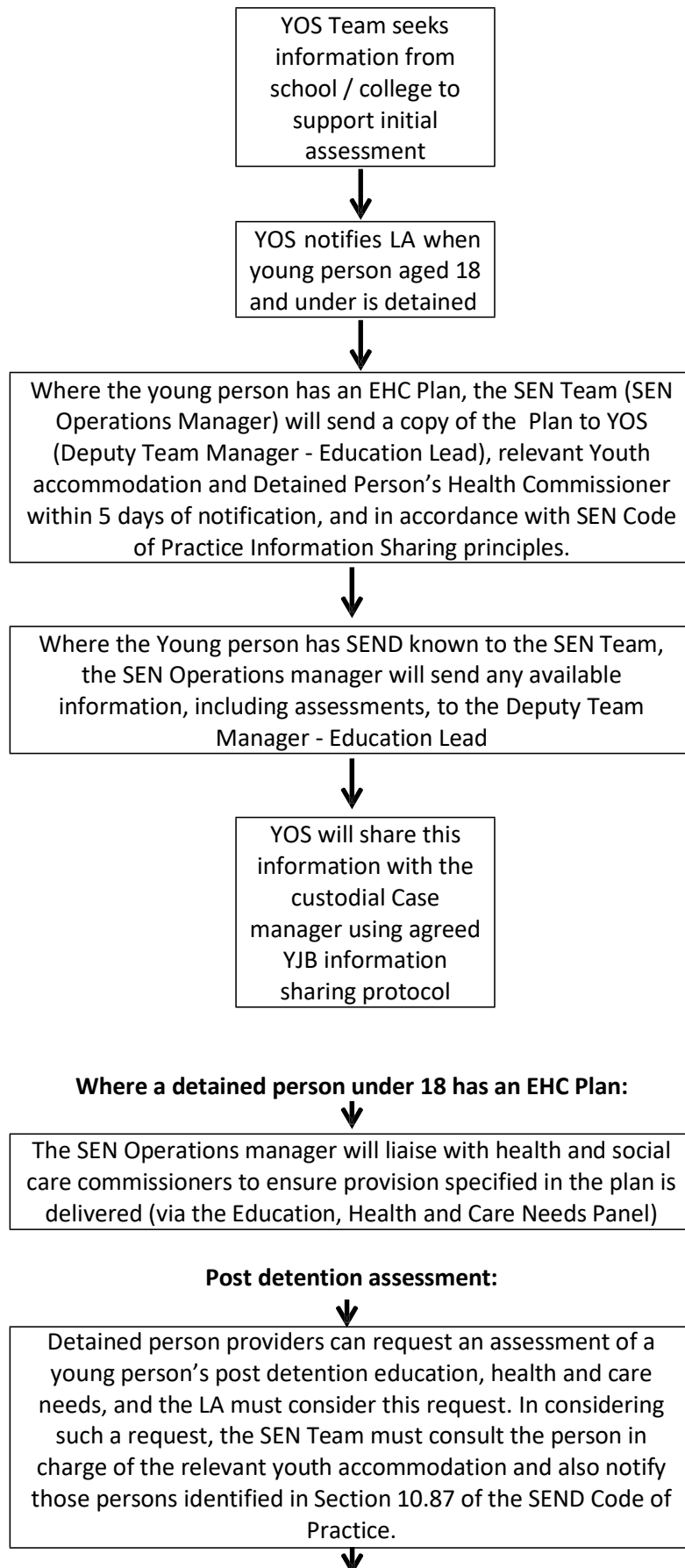


Local Protocol for supporting children and young people with SEND in Youth Custody



Where it is agreed to carry out an EHC assessment of a detained person, the process identified in Section 10.91 of the SEND Code of Practice will be followed.

Detained while EHC Assessment is underway:



Where a young person is detained part way through an EHC assessment, the SEN Team must ensure the assessment is completed within the statutory timeframe.

Duties towards young people with an EHC Plan who are detained:



YOS (Deputy Team Manager - Education Lead) must notify the SEN Operations manager when a detained young person with SEN is moved from one youth accommodation to another. Where the young person has an EHC Plan, the SEN Team must send a copy of the plan to the person in charge of the new accommodation within 5 days of notification and inform the Health Commissioner



When a young person is in custody, the LA must not amend or cease an EHC Plan



YOS (Deputy Team Manager - Education Lead) must notify the LA (Head of Admissions and Children Missing Education) of any detained person under the age of 18 release date. The Head of Admissions and Children Missing Education will notify the SEN Operations manager where the young person has an EHC Plan



The LA must review a young person's EHC Plan as soon as possible on release. (See SEND Code of Practice 10.139 if the young person has a new LA on release).

NB For LAC, Belonging Regulations (i.e. where a child is normally resident apply re Section 10.142 of the SEN Code of Practice

